

Box Properties

--Description--

Name: W3-2052S

Type: Passive Radiator Box

Shape: Prism, square

--Box Parameters--

Vb = 1 liters

V(total) = 1.151 liters

QL = 7

F3 = 61.27 Hz

Fill = minimal

--Passive Radiators--

No. of Passive Radiators = 1

Fs = 14.21 Hz

Qms = 1.362

Vas = 14.97 liters

Cms = 6.269 mm/N

Mms = 20 g

Rms = 1.312 kg/s

Sd = 41 sq.cm

Driver Properties

--Description--

Name: W3-2052S

Type: Standard one-way driver

--Configuration--

No. of Drivers = 1

--Driver Parameters--

Fs = 58 Hz

Qms = 3.38

Vas = 0.9 liters

Xmax = 3.5 mm

Sd = 32 sq.cm

Qes = 0.37

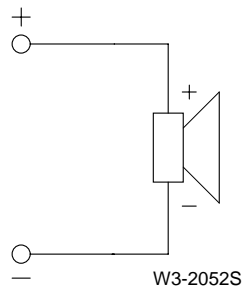
Re = 3.9 ohms

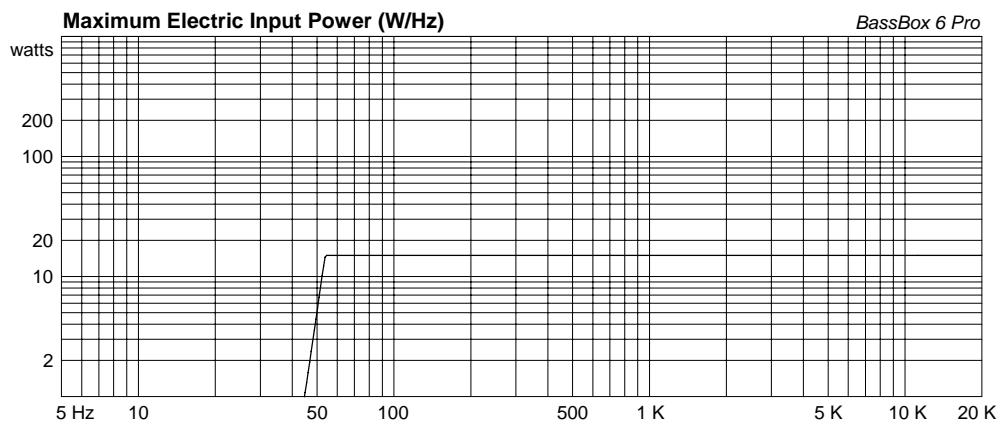
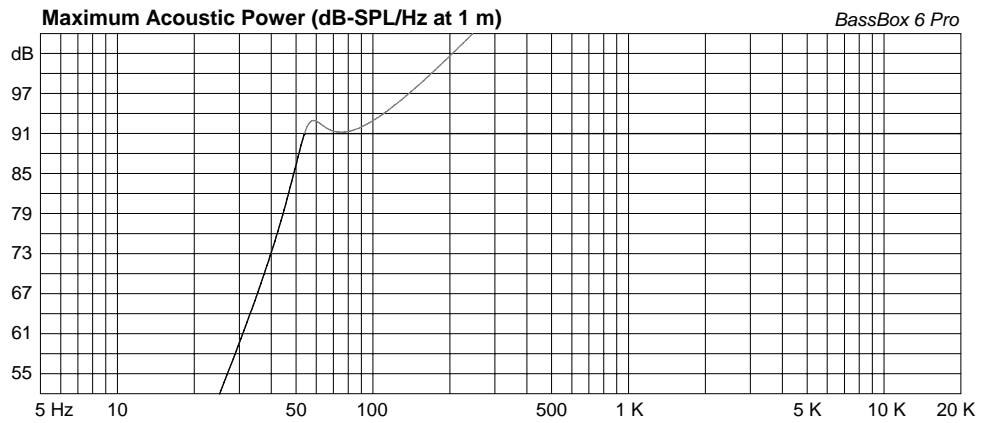
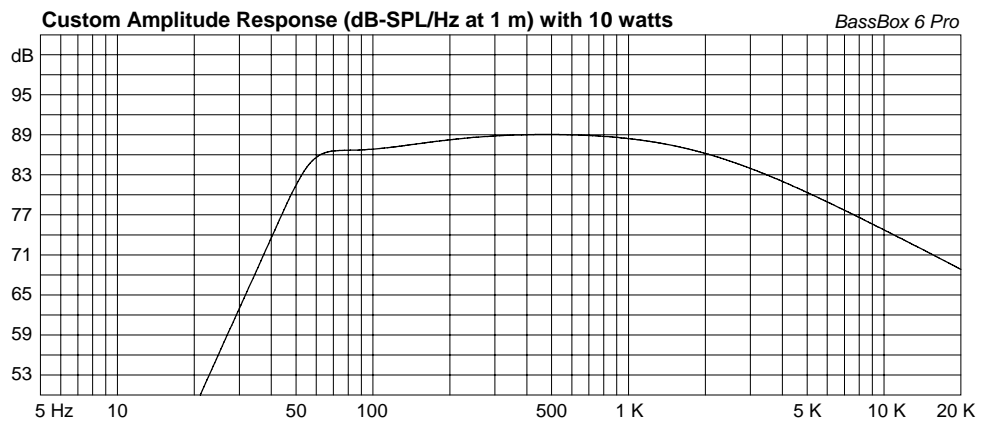
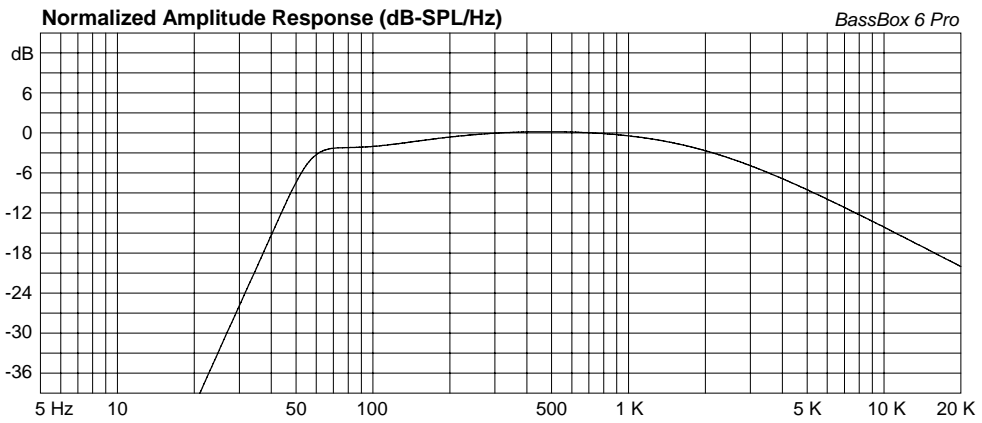
Le = 0.31 mH

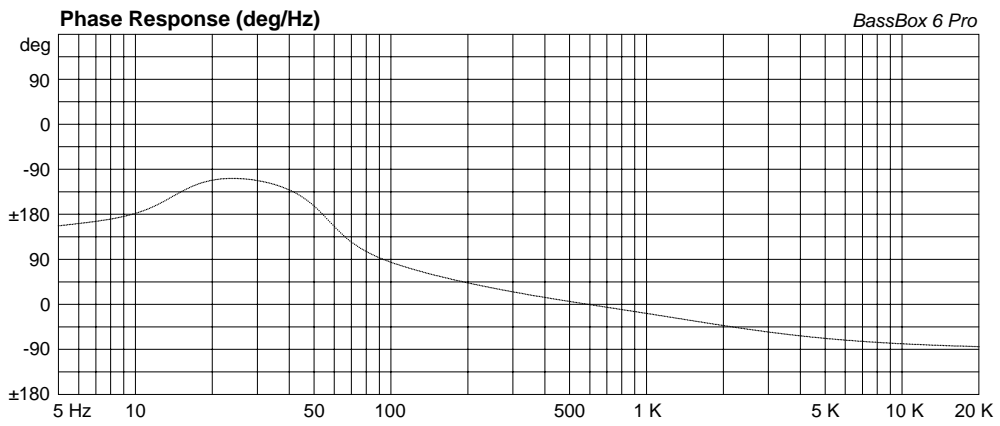
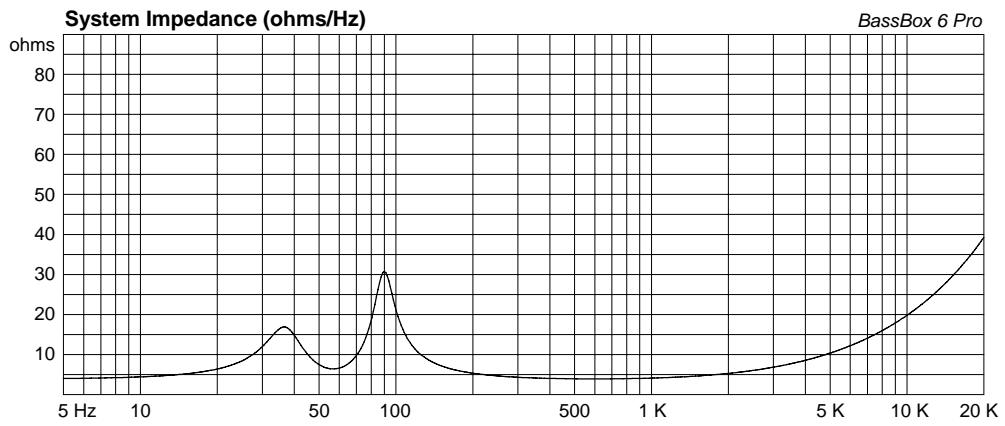
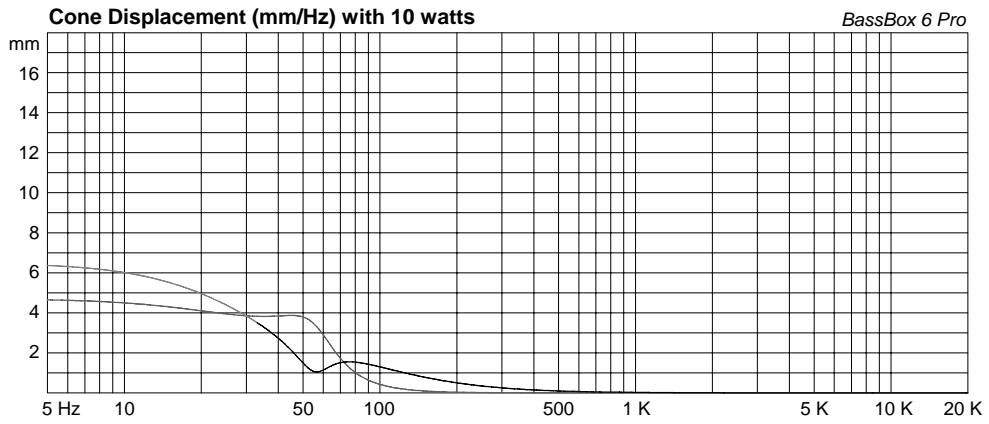
Z = 4 ohms

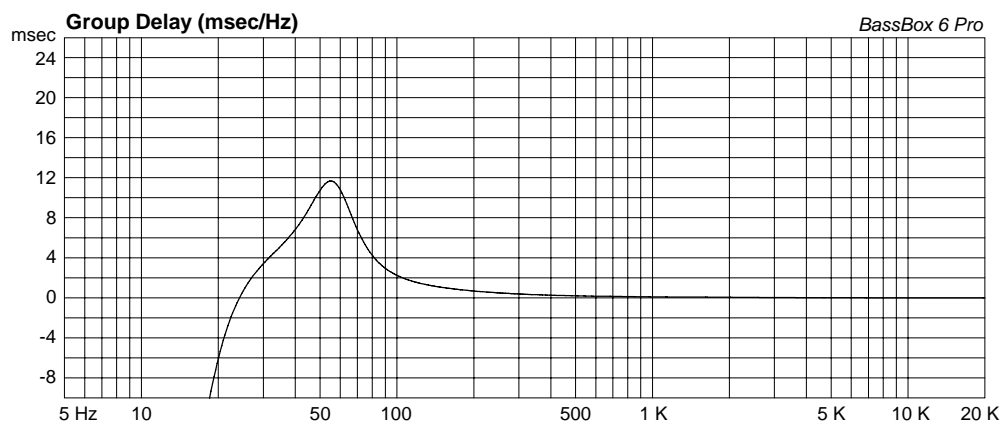
Pe = 15 watts

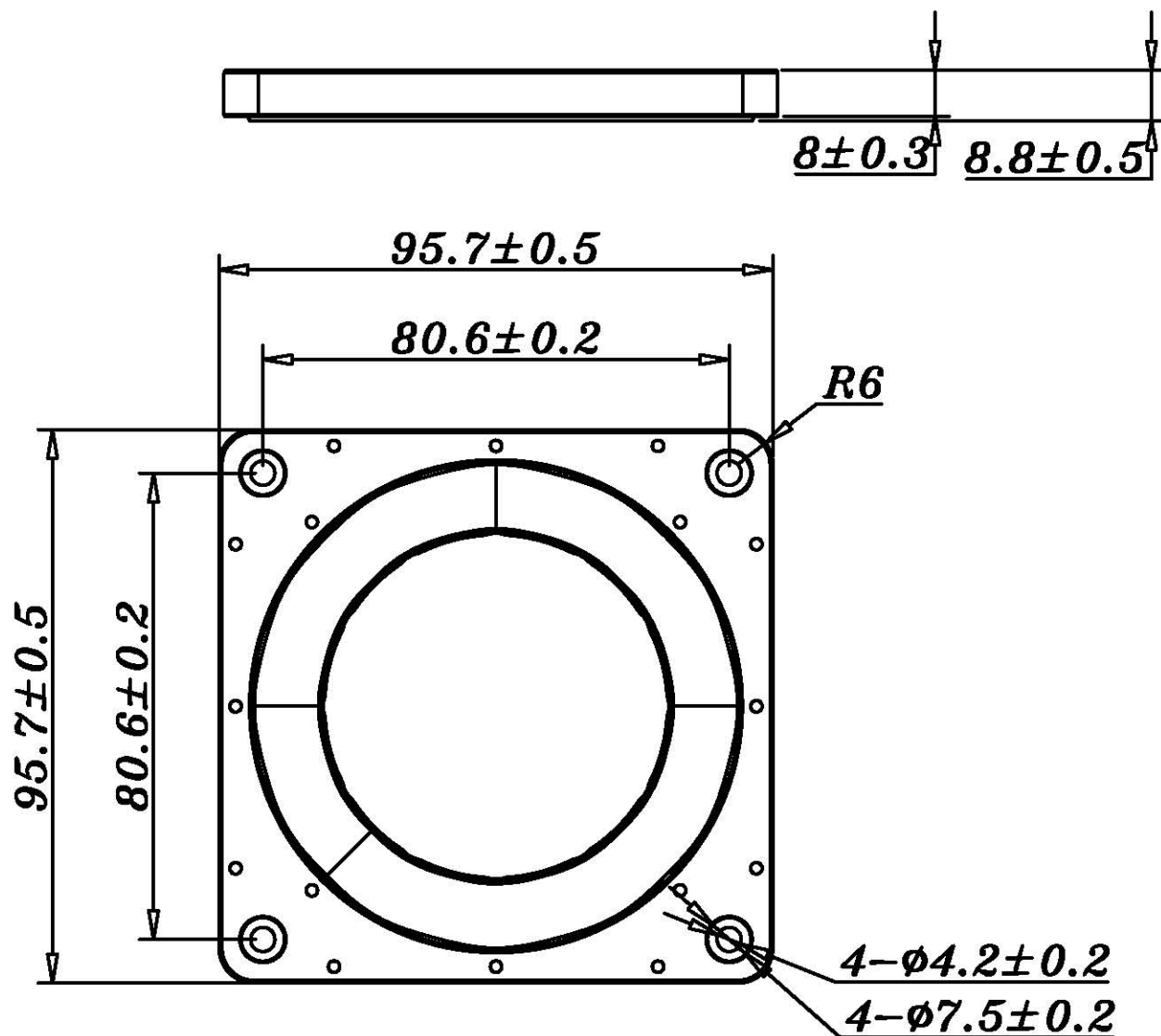
Wiring Diagram











Material(材质):Rubber

TB
speaker

PR11

Rev:R01

Date : 2015-09-07